

**SOLANO COUNTY
CIVIL GRAND JURY**

2025-2026

**SOLANO COUNTY
RECLAMATION/LEVEE DISTRICTS**

June 10, 2026

Solano County Reclamation/Levee Districts

2025-2026 Solano County Civil Grand Jury

I. SUMMARY

Despite legal requirements for Reclamation Districts within Solano County to maintain current Municipal Service Reviews, the Solano County Civil Grand Jury (Jury) found widespread gaps in essential information, including missing trustee names, expired terms, absent meeting schedules, and incomplete leadership data across numerous districts. An investigation by the Jury raised concerns about transparency, accountability, and basic public access to information across Solano County's Reclamation Districts - agencies that play a critical role in flood control, levee maintenance, and land management in a region increasingly vulnerable to sea level rise.

II. INTRODUCTION

In California, special districts are independent or dependent governmental units created to provide a specific public service within a defined area. This service may cross city or county boundaries (including unincorporated areas), when local control is preferable to state or county control. Independent special districts form their own elected governing boards. Dependent special districts are controlled by a city or county board.

Since 1963, every county in California has a Local Agency Formation Commission (LAFCO) that regulates growth and urbanization within that county. The LAFCO oversees city boundaries, addition of new infrastructure, and creation of Special Districts. A LAFCO is typically made up

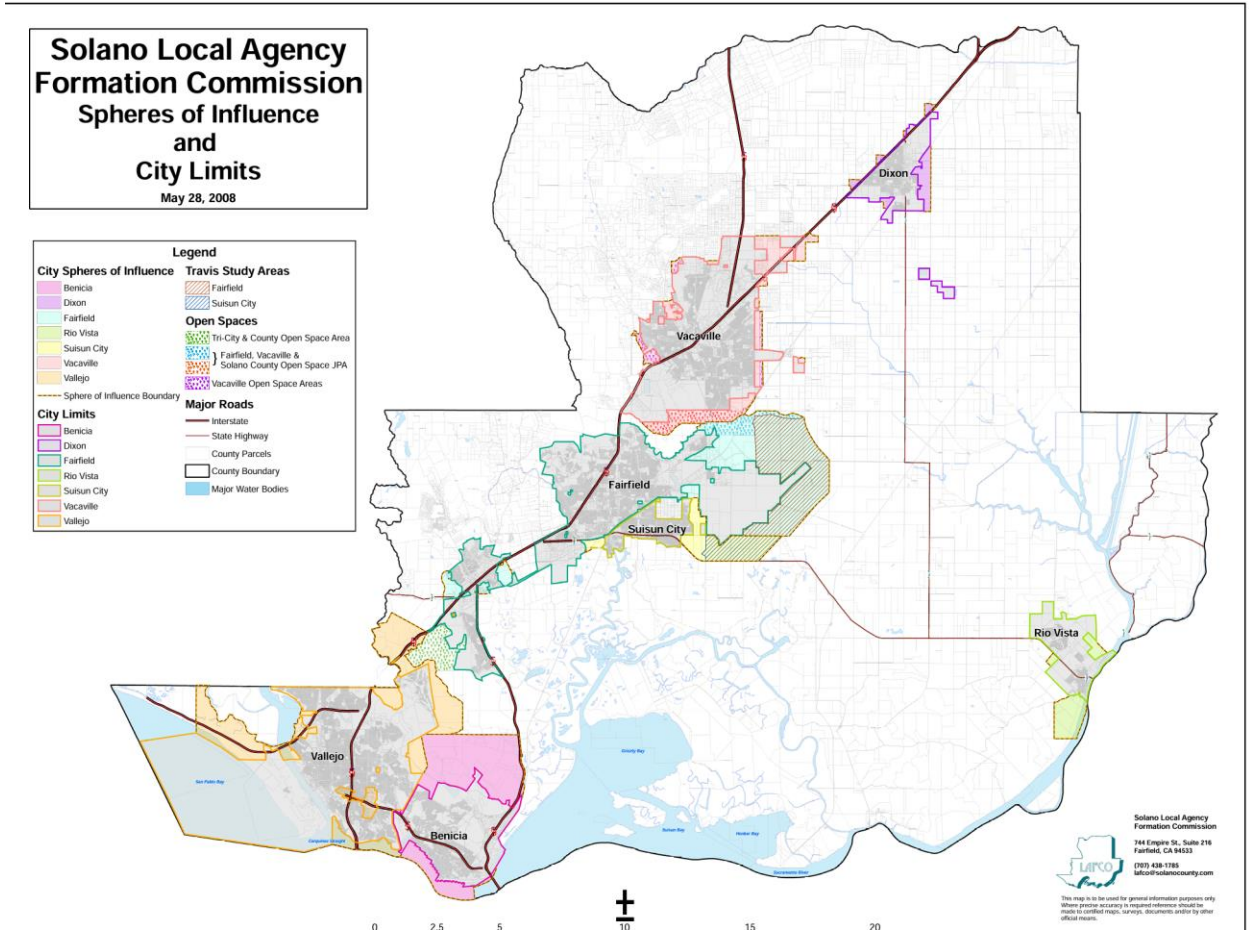
of five people, including members of Board of Supervisors member, city council members, representatives from the public, or Special District representatives.

Special Districts must comply with the Cortese–Knox–Hertzberg Local Government Reorganization Act of 2000. This includes preparation of Municipal Service Reviews (MSRs) that provide current information on the boundaries, purpose, and leadership of that district. LAFCO is required to review each district’s MSR and Sphere of Influence (SOI) every five years, as necessary.

Common types of Special Districts include: Fire Protection, Water Supply, Transit, Utilities, Flood Control, and Reclamation/Levee.

According to the National Oceanic and Atmospheric Administration (NOAA), global average sea levels have risen eight to nine inches since 1880. The rate has more than doubled throughout most of the Twentieth Century. In 2023, global average sea levels set a new high of approximately four inches above 1993 levels. In many locations along the coastline of the United States, the rate of local sea level rise is greater than the global average.

Solano County has over 100 miles of tidal bays, delta waterways, and sloughs, as well as over 400 miles of levees. Reclamation Districts focus on flood control, land reclamation, irrigation, and drainage. The 2025-26 Solano County Civil Grand Jury (Jury) chose to review the currently available Reclamation District MSRs to ensure the public has the most up-to-date information.



The image shows a map of Solano LAFCO Spheres of Influence and City Limits

III. STATEMENT OF FACTS

The Jury examined the February 2026 Solano LAFCO Agency Directory titled “Reclamation & Levee Districts” to make the following determinations.

Reclamation District No. 501 – Ryer Island

Under Board of Trustees sub-heading: Missing “Began Serving” and “Term Expires” information.

Reclamation District No. 999 - Netherlands

Under Board of Trustees sub-heading: Missing “Began Serving” information.

Reclamation District No. 2034 - Chadbourne

Under Board of Trustees sub-heading: Missing “Meets” information. Also missing “Name” of “Secretary” and “Began Serving” and “Term Expires” information.

Reclamation District No. 2093 – Liberty Island

Under Board of Trustees sub-heading: States Meets “as needed.” Also missing three Trustee “Names” and “Began Serving” and “Term Expires” information.

Reclamation District No. 2098 – Cache-Haas Slough

Under Board of Trustees sub-heading: States Meets “as needed.”

Reclamation District No. 2104 – Peters Pocket

Under Board of Trustees sub-heading: Missing “Began Serving” and “Term Expires” information. Missing Trustee “Name.”

Reclamation District No. 2112 – Shafer-Pintail

Under Board of Trustees sub-heading: Missing “Began Serving” and “Term Expires” information.

Reclamation District No. 2127 – Simmons-Wheeler (restructuring)

Under Board of Trustees sub-heading: Missing “Began Serving” and “Term Expires” information.

Reclamation District No. 2130 – Honker Bay

Under Board of Trustees sub-heading: Missing Trustee “Name” and “Began Serving” and “Term Expires” information.

Reclamation District No. 2135 – Sunrise Island

Under Board of Trustees sub-heading: States Meets “as needed.”

Reclamation District No. 2136 – Grizzly West

Under Board of Trustees sub-heading: Missing “Began Serving” information.

Reclamation District No. 2138 – Morro Island

Under Board of Trustees sub-heading: Missing “Began Serving” and “Term Expires” information. Missing three Trustee “Names.”

Reclamation District No. 2141 – Joice Island

Under Board of Trustees sub-heading: All “Trustee” terms have expired.

Collinsville Levee District

Under Board of Trustees sub-heading: Missing “Began Serving” and “Term Expires” information.

IV. FINDINGS AND RECOMMENDATIONS

FINDING 1 – Lack of up-to-date required information could lead to the public’s inability to contact Reclamation District personnel.

RECOMMENDATION 1 – LAFCO contact listed Reclamation Districts to complete and update required information in the directory website by November 1, 2026.

V. COMMENTS

Due to the potential dangers of sea level rise and climate change, complete and accurate information is crucial for the Solano County Reclamation/Levee Districts and the citizens of Solano County. The waterways of the County are affected by tidal flows, the annual melting of the snowpack from the Sierra Nevada Mountains, and potential destruction by flora and fauna.

LAFCO’s review of each District’s MSR and Sphere of Influence every five years, as necessary, may not be adequate to maintain updated information from the individual Districts.

VI. METHODOLOGY

- Reviewed the Cortese–Knox–Hertzberg Local Government Reorganization Act of 2000 (https://calafco.org/images/downloads/Cortese_Knox_Hertzberg_Act/ckh_2024_update.pdf)

- Reviewed the Governor’s Office of Planning and Research published guidelines for MSRs (<https://www.solanolafco.com/documents/california-opr-municipal-service-review-guidelines/>)
- Reviewed a document Solano LAFCO prepared to assist special districts with the reporting requirements (<https://storage.googleapis.com/proudcity/solanocountylafcoa/2024/10/MSR-Guidelines.pdf>)
- Reviewed the February 2026 Solano LAFCO Directory of Cities and Special Districts (solano LAFCO directory of cities and special districts)
- <https://www.solanolafco.com/documents/all-city-soi-boundary-map/>

VII. REQUIRED RESPONSES

- Solano County LAFCO

COURTESY COPY

- Solano County Board of Supervisors